

QWT90-20 WR-90, 20W

Features:
* Low VSWR

Applications:
* Transmitters
* Antennas
* Laboratory Test
* Impedance Matching

Electrical

Frequency: 8.2~12.5GHz
Average Power: 20W
VSWR: 1.2 max.

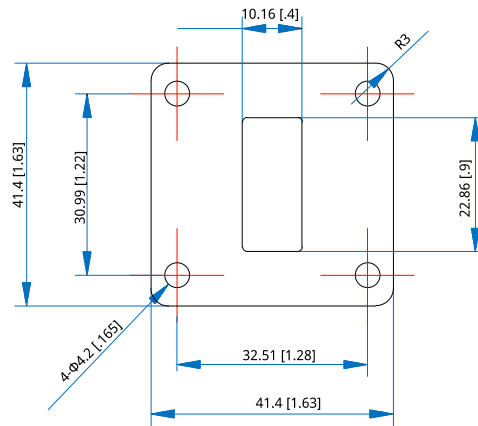
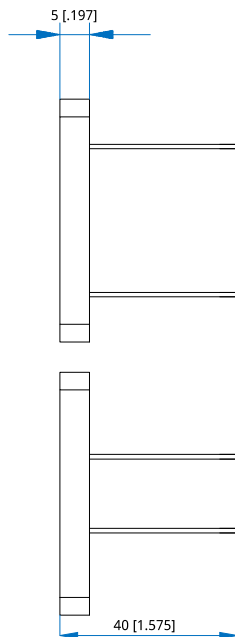
Mechanical

Waveguide Size: WR-90 (BJ100)
Flange: FBP100

Environmental

Temperature: -55~+125°C

Outline Drawings



Outline A

Unit: mm [in]
Tolerance: $\pm 0.5\text{mm}$ [$\pm 0.02\text{in}$]

How To Order

QWT90-20-Y-Z

Y: Material

Z: Flange type

Material naming rules:
A - Aluminum (Outline A)

Flange naming rules:

1 - FBP100 (Outline A)

Examples:

To order a small size waveguide termination, WR-90, 20W, Aluminum, FBP100, specify QWT90-20-A-1.

Customization is available upon request.